

STANDARD DIMENSIONS

	PART NUMBER	A INCHES (MM)	B INCHES (MM)	C INCHES (MM)	D INCHES (MM)
FIGURE 1	730-0051	2.31" (58.7)	6.31" (160.3)	2.30" (58.4)	-
	730-0052	2.69" (68.3)	7.69" (195.3)	2.98" (75.7)	-
	730-0053	3.25" (82.6)	8.88" (225.6)	3.74" (95.0)	-
	730-0054	3.75" (95.3)	10.25" (260.4)	4.66" (118.4)	-
FIGURE 2	730-0055	3.20" (81.3)	9.70" (246.4)	1.94" (49.3)	2.17" (55.1)
	730-0056	3.18" (80.8)	6.69" (169.9)	2.20" (55.9)	1.77" (45.0)
	730-0057	3.20" (81.3)	9.70" (246.4)	1.99" (50.5)	2.17" (55.1)
	730-0058	3.20" (81.3)	9.70" (246.4)	1.94" (49.3)	2.17" (55.1)
FIGURE 3	730-5131	1.25" (31.8)	3.25" (82.6)	0.70" (17.8)	0.87" (22.1)
FIGURE 4	730-0133	1.13" (28.6)	2.00" (50.8)	1.93" (48.9)	-
FIGURE 5	730-0045	1.81" (46.0)	2.66" (67.5)	-	-

FIGURE 3

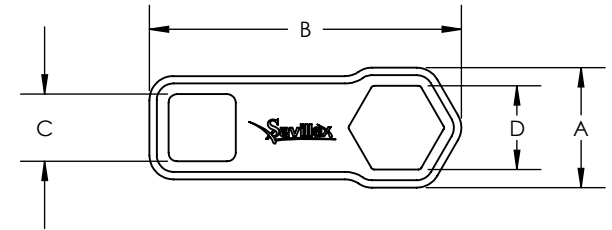


FIGURE 1

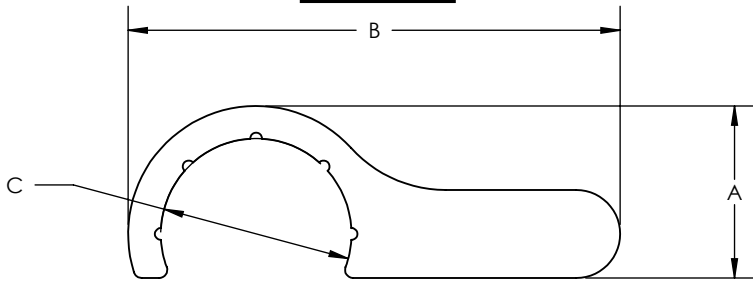


FIGURE 4

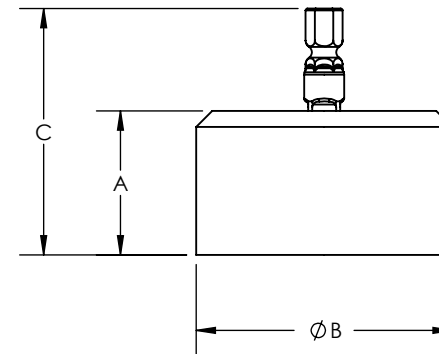


FIGURE 2

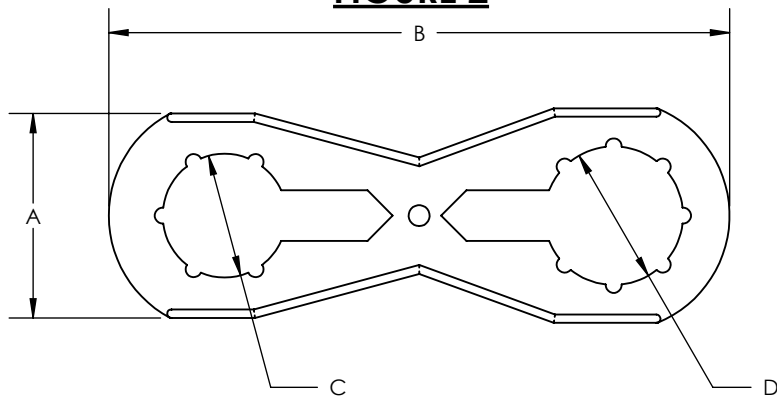


FIGURE 5

