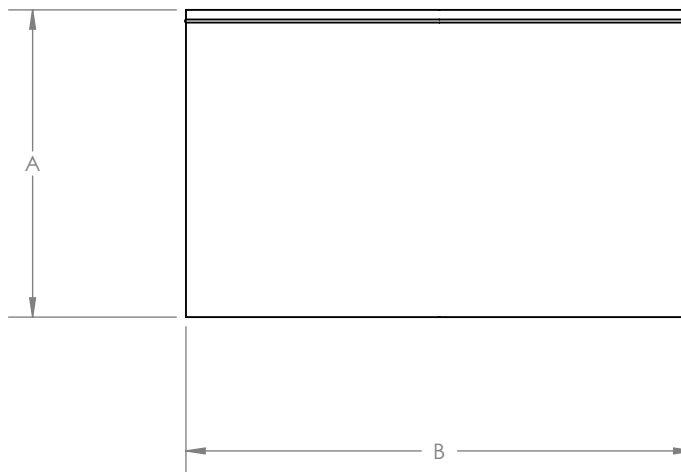


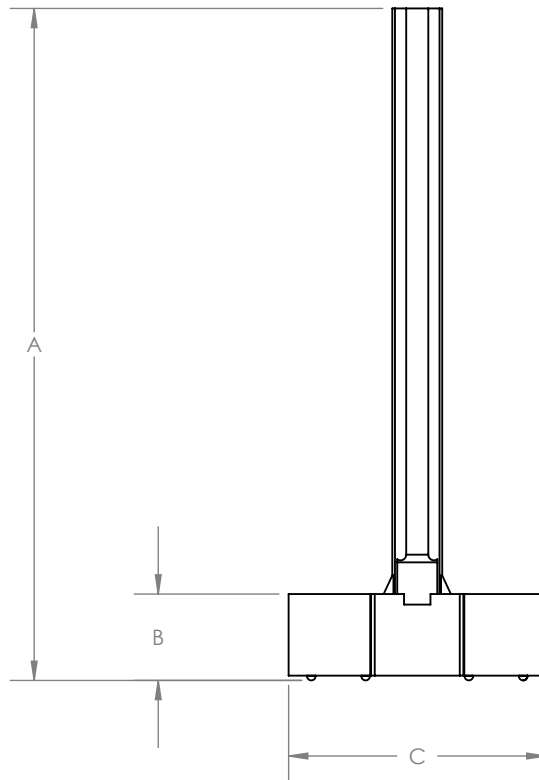
**STANDARD DIMENSIONS**

<b>PART NUMBER</b>	<b>VOLUME</b>	<b>A INCHES (MM)</b>	<b>B INCHES (MM)</b>
700-100	15 mL	0.53" (13.5)	2.20" (55.9)
700-125	100 mL	0.74" (18.8)	4.12" (104.7)
700-150	100 mL	1.20" (30.5)	3.55" (90.2)
700-650	-	0.25" (6.4)	3.25" (82.6)
700-706	14 mL	0.80" (20.3)	1.32" (33.5)
700-710	2 mL	0.75" (19.1)	0.63" (16.0)
700-712	6 mL	0.82" (20.8)	0.88" (22.4)
700-720	50 mL	1.70" (43.2)	1.85" (47.0)
700-724	3 mL	0.75" (19.1)	0.62" (15.7)
700-730	125 mL	2.38" (60.5)	2.55" (64.8)
700-740	250 mL	3.00" (76.2)	3.06" (77.7)
700-750	500 mL	3.50" (88.9)	3.69" (93.7)
700-960	2400 mL	6.07" (154.2)	6.00" (152.4)



### STANDARD DIMENSIONS

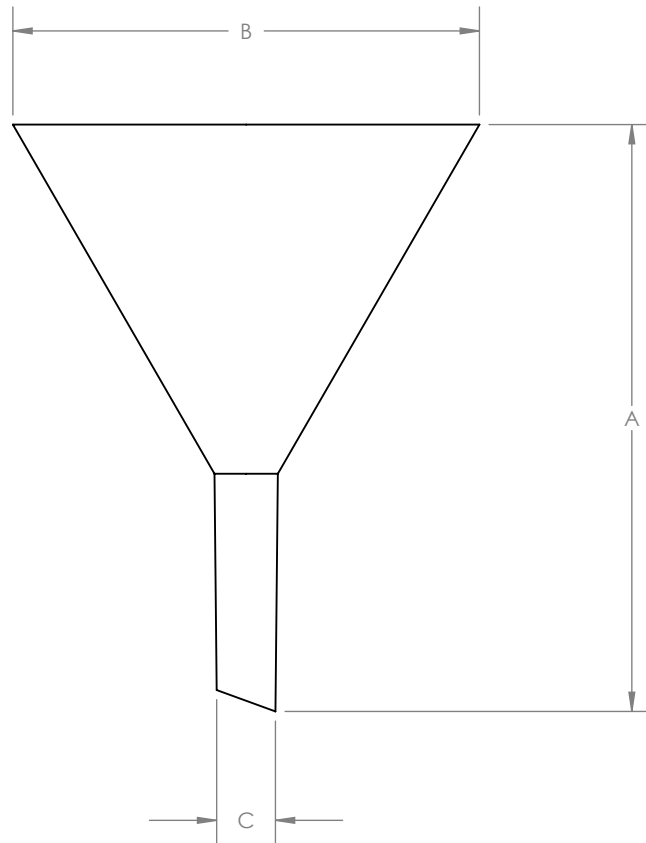
PART NUMBER	A INCHES (MM)	B INCHES (MM)	C INCHES (MM)
700-200	7.00" (177.8)	0.90" (22.9)	2.68" (68.1)
700-225	6.98" (177.3)	0.88" (22.4)	2.68" (68.1)
700-240	6.98" (177.3)	0.88" (22.4)	2.68" (68.1)



TITLE:  
**GENERAL LABWARE  
DIMENSIONS**

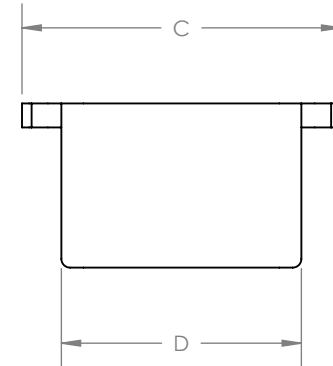
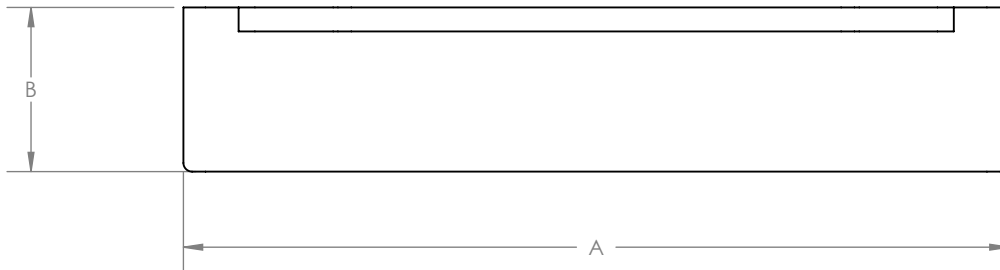
### STANDARD DIMENSIONS

PART NUMBER	VOLUME	A INCHES (MM)	B INCHES (MM)	C INCHES (MM)
700-417	100 mL	1.66" (42.2)	1.88" (47.8)	0.68" (17.3)
700-440	40 mL	3.06" (77.7)	2.43" (61.7)	0.31" (7.9)
700-480	80 mL	5.30" (134.6)	3.33" (84.5)	0.27" (6.9)
700-870	100 mL	3.18" (80.8)	3.03" (77.0)	-



### STANDARD DIMENSIONS

PART NUMBER	A INCHES (MM)	B INCHES (MM)	C INCHES (MM)	D INCHES (MM)
700-900	3.45" (87.6)	1.00" (25.4)	1.93" (49.0)	1.72" (43.7)
700-925	4.30" (109.2)	0.86" (21.8)	1.66" (42.2)	1.25" (31.8)
700-950	6.15" (156.2)	2.10" (53.3)	4.78" (121.4)	4.15" (105.4)



### STANDARD DIMENSIONS

PART NUMBER	VOLUME	A INCHES (MM)	B INCHES (MM)	C INCHES (MM)
700-510	10 mL	4.67" (118.5)	0.77" (19.7)	4.06" (103.1)
700-511	-	6.77" (172.0)	0.09" (2.4)	0.77" (19.6)
700-520	20 mL	5.76" (146.3)	0.90" (22.9)	4.56" (115.6)
700-521	20 mL	13.75 (349.2)	0.90" (22.9)	4.56" (115.6)

